

KO-70B-1-360V-A

Flat Omni Antenna

Product Description

A typical application for these Omni antennas would be in building distribution of CDMA, GSM, DCS, PCS & WLAN signals. Features include: reliable, cost effective, light weight, durable construction, quick and easy installation.

Technical Specifications

Model	KO-70B-1-360V-A
Antenna Type	Flat Omni Antenna

Electrical Specifications

Frequency (MHz)	700 - 3500
Gain (dBi)	700 – 960 1710-3500
	2 2

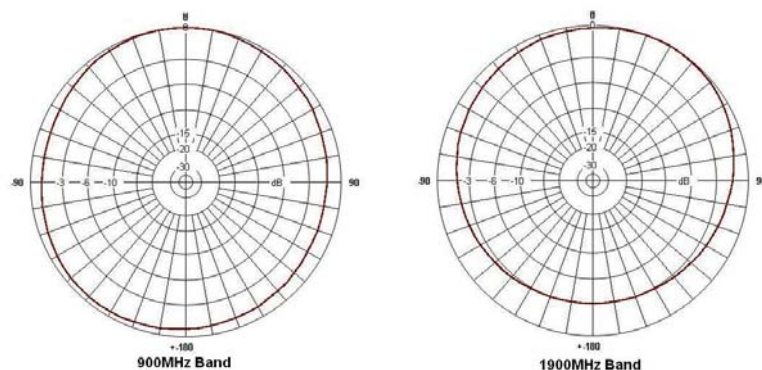
VSWR	1.7:1 typical 2:1 Max
Radiation Pattern	Near Omni
Impedance (Ohms)	50
Max Power per Input (Watts)	50
Connector	N Female

Mechanical Specifications

Dimension (mm)	126 x 54 x 8.2
Weight (grams)	90
Radome Material	ABS White
Temperature Range (Celsius)	-20 to +70

Specifications subject to change without notice. Last updated: 2010.01.25.

Product Image



Couplers

Product Description

These couplers are useful for monitoring and measuring power levels from antennas and different points in a communication system. They can satisfy almost any requirement for sampling incident microwave power conveniently and accurately with minimal disturbance. Features include: reliable, cost effective, light weight, durable construction, quick and easy installation.

Technical Specifications

Model:	TA-342 012 00	TA-342 013 00	TA-342 011 01
Product Type:	7 dB Coupler	10 dB Coupler	15 dB Coupler

Electrical Specifications

Frequency: (MHz)	800 – 2500		
Insertion loss thru port: (dB)	1.4	0.7	0.5
Coupling: (dB)	7 ±1	10 ±1	15 ±1
Dissipative Loss: (dB)	< 0.05 – 0.1		
Impedance: (Ohms)	50		
VSWR:	1.25:1		
Inter-modulation at 2*43 dBm Carrier: (dBc)	< - 140		
Max Power Per Input (Watts)	100		
Connector Type:	N (F)		
Isolation: (dB)	26	30	35
Weight: (grams / lbs)	200 / 0.44		
Operating Temperature:	-20°C to +60°C		
Dimensions: (L x W x H) (mm/in)	135 x 40 x 25 / 5.32 x 1.58 x 0.99		

Specifications subject to change without notice. Last updated: 2010.01.25.

Product Image



Couplers

Product Description

These couplers are useful for monitoring and measuring power levels from antennas and different points in a communication system. They can satisfy almost any requirement for sampling incident microwave power conveniently and accurately with minimal disturbance. Features include: reliable, cost effective, light weight, durable construction, quick and easy installation.

Technical Specifications

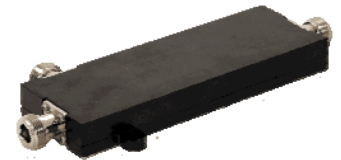
Model:	TA-342 012 07	TA-342 012 10	TA-342 012 15	TA-342 012 30
Product Type:	7 dB Coupler	10 dB Coupler	15 dB Coupler	30 dB Coupler

Electrical Specifications

Frequency: (MHz)	698 – 3500			
Insertion loss through port: (dB) max.	1.4	1	0.6	0.3
Coupling: (dB)	7 ±1	10 ±1	15 ±1	30 ±1
Dissipative Loss: (dB)	< 0.05 – 0.1			
Impedance: (Ohms)	50			
VSWR:	1.5:1			
Inter-modulation at 2*43 dBm carrier: (dBc)	< - 140 dBc			
Max Power Per Input: Watts)	100			
Connector:	N (F)			
Isolation: (dB)	25	30	30	40
Weight: (grams / lb)	350 / 0.77			
Operating Temperature :	-20°C to +60°C			
Dimensions: (L x W x H) (mm / in)	142 x 47.5 x 17.5 / 5.6 x 1.9 x 0.67		142 x 47.5 x 17.5 / 6 x 1.9 x 0.67	

Specifications subject to change without notice. Last updated: 2010.01.25.

Product Image



Splitters

Product Description

These multi purpose splitters are designed to divide an incoming RF signal equally into 2, 3 or 4 outputs. A typical application would be in building distribution of CDMA, GSM, DCS, PCS & WLAN signals. Features include: reliable, cost effective, light weight, durable construction, quick and easy installation.

Technical Specifications

Model:	TA-340 002 02	TA-340 002 03	TA-340 002 04
Product Type:	2-Way Splitter	3-Way Splitter	4-Way Splitter

Electrical Specifications

Frequency: (MHz)	698 – 3500		
Split Loss: (dB)	3	4.78	6
Insertion Loss: (dB)	< 0.3	< 0.5	< 0.7
Impedance : (Ohms)	50		
Maximum Input: (Watts)	100		
Connector:	N – Female		
VSWR:	1.3:1 Max		
Inter-modulation at 2*43 dBm Carrier: (dBc)	< - 140		

Mechanical Specifications

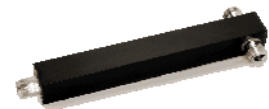
Dimensions: (L x W x H) (mm / in)	196.4 x 25 x 25 / 7.7 x 0.98 x 0.98		
Weight: (grams / lb)	350 / 0.77	370/0.81	390/0.85
Material:	Aluminum		
Finish:	Black Power Coat		

Environmental Specifications

Temperature Range: (Celsius)	- 20 to + 60		
------------------------------	--------------	--	--

Specifications subject to change without notice. Last updated: 2010.01.25.

Product Image



2-Way Splitter



3-Way Splitter



4-Way Splitter

KS-70B-1-70-A

Patch Panel Antenna

Product Description

This 6 dBi Patch Antenna is specially designed for in - building distribution of CDMA, GSM, DCS, PCS & WLAN signals.

Technical Specifications

Model	KS-70B-1-70-A
Antenna type	Panel

Electrical Specifications

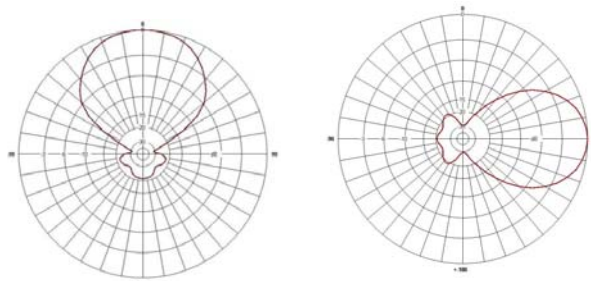
Frequency (MHz)	700-3500
Gain (dBi)	6
VSWR	1.7:1 (Typ), 2.0:1 (max)
Polarization	Vertical
Horizontal beam width (deg)	70
Vertical beam width (deg)	50
Front to back ratio (dB)	18
Intermodulation at IM3 ;2* 43dBm carrier 700-3500MHz (dBc)	-140
Impedance (ohms)	50
Max Power (watts)	100
Connector	N(F)

Mechanical Specifications

Dimension (mm)	205 x 156 x 48
Weight (grams)	330
Finish	White ABS
Connector position	Bottom feed
Temperature Range(Celsius)	-20 to 80

Specifications subject to change without notice. Last updated: 2010.01.25.

Antenna Pattern



Azimuth

Elevation

Product Image



KO-70B-1-360V-B

Omni Antenna

Product Description

This Omni Antenna is specifically designed for in - building distribution of CDMA, GSM, DCS, PCS & WLAN signals.

Technical Specifications

Model	KO-70B-1-360V-B
Antenna type	Omni

Electrical Specifications

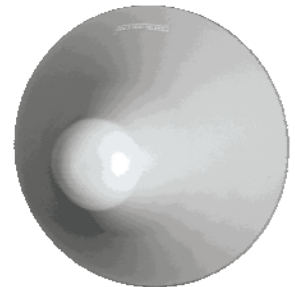
Frequency (MHz)	700-3500	
Gain (dBi)	700-960	1710-3500
	2	4
VSWR	1.5:1 (Typ), 2.0:1 (max)	
Polarization	Vertical	
Pattern	Near Omni	
Intermodulation at IM3 ; 2* 43dBm carrier, 700-3500MHz (dBc)	< -140	
Impedance (ohms)	50	
Max Power (watts)	100	
Connector	N (F)	

Mechanical Specifications

Dimensions (mm)	165(D) x 120 (H)
Weight (Grams)	300
Radome Material	ABS White
Temperature Range (Celsius)	-20 to +70

Specifications subject to change without notice. Last updated: 2010.01.25.

Product Image



Antenna Pattern

