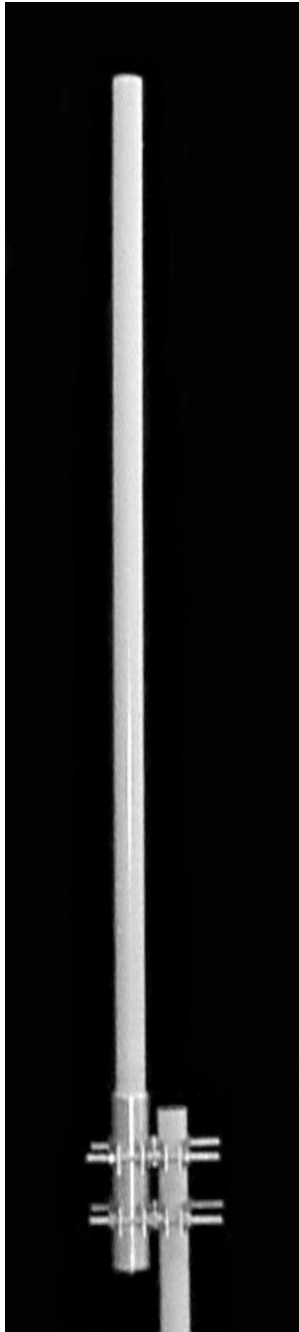


## TA-1850-2 Omnidirectional 1850-1990 MHz



The TA-1850-2 is a 12 dBi omnidirectional antenna consisting of center fed collinear dipoles in a UV stabilized fiberglass radome. The antenna is designed for severe weather conditions and is at DC ground to aid in lightning protection. Due to the very narrow elevation beamwidth, TIL-TEK recommends that this antenna be used on stable platforms and where other options are not practical.

### Electrical Specifications

**Frequency Range:** 1850-1990 MHz  
**Gain:** 12 dBi  
**VSWR:** 1.5:1 max.  
**Polarization:** Vertical  
**Power Rating:** 200 Watts  
**H-Plane Beamwidth:** 360 degrees  
**E-Plane Beamwidth:** 4 degrees  
**Electrical Downtilt:** 0, 2 degrees  
**Cross Pol. Discrimination:** 20 dB min.  
**Impedance:** 50 ohms nominal  
**Termination:** N female (7/16 DIN optional)

Typical mid band values. (For details , contact factory)  
 Specifications subject to change without notice

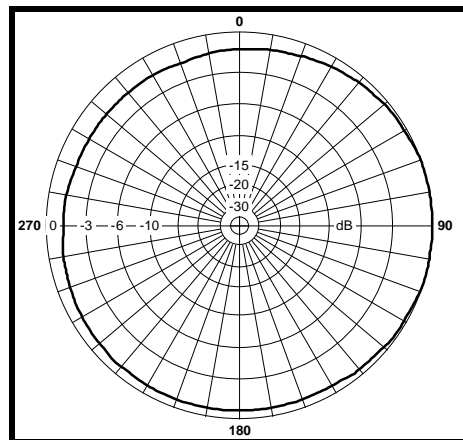
### Mechanical Specifications

**Length:** 100.5 in. (2553 mm)  
**Diameter:** 2.25 in. (57 mm)  
**Weight (Incl. Clamps):** 20 lb. (9.1 kg)  
**Rated Wind Velocity:** 125 mph (200 km/h)  
**Hor. Thrust at rated wind:** 65 lb. (29.5 kg)  
**Mounting (O.D.):** 1.75 - 4.0 in. (44.5 - 102 mm)

### Materials

**Radiating Elements:** Copper  
**Radome:** Gray UV stabilized fiberglass  
**Clamps:** HDG steel

H-Plane



E-Plane

