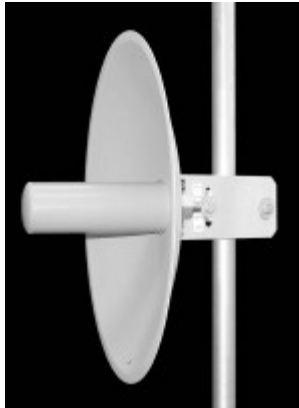


# LANtenna Series

## TA-2418 Solid Parabolic

### 2400-2483 MHz



TA-2418

The TA-2418 is an 18 inch diameter solid parabolic antenna. The antenna feed is bolted to the aluminum reflector so the polarization can easily be changed in the field by rotating the antenna through 90 degrees. A full radome (TA-2418R) is also available for extreme weather conditions.

#### Electrical Specifications

**Frequency Range:** 2400-2483 MHz  
**Gain:** 19 dBi  
**VSWR:** 1.5:1 max.  
**Front to Back Ratio:** 25 dB min.  
**Polarization:** Vertical or Horizontal  
**Power Rating:** 100 Watts  
**H-Plane Beamwidth:** 18 degrees  
**E-Plane Beamwidth:** 20 degrees  
**Cross Pol. Discrimination:** 25 dB min.  
**Impedance:** 50 ohms nominal  
**Termination:** N female

Typical mid band values. (For details, contact factory)  
 Specifications subject to change without notice

#### Mechanical Specifications

**Diameter:** 19.25 in. (489 mm)  
**Depth:** 8 in. (204 mm)  
**Weight (Incl. Clamps):** 12 lb. (5.5 kg)  
**Rated Wind Velocity:** 125 mph (200 km/h)  
**Hor. Thrust at rated wind:** 136 lb. (61.8 kg)  
     **with radome:** 60 lb. (31.4 kg)  
**Mechanical Tilt:** 0 ± 10 degrees  
**Mounting (O.D.):** 1.75 - 4.0 in. (44.5 - 102 mm)

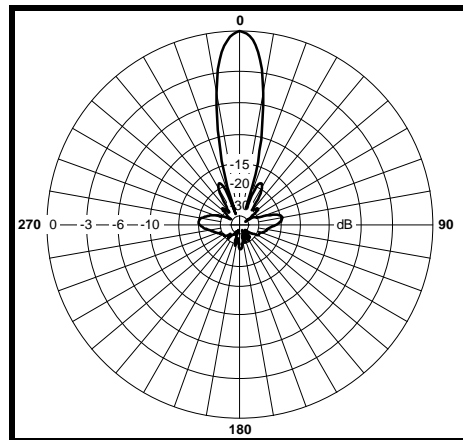
#### Materials

**Radiating Elements:** Plated copper on PCB  
**Reflector:** Irridited aluminum  
**Radome:** Gray UV stabilized ASA  
**Clamps:** Aluminum and HDG steel



TA-2418R

H-Plane



E-Plane

