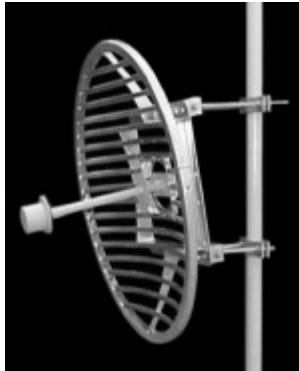


# LANtenna Series

## TA-2436 Grid Parabolic

### 2400-2483 MHz



The TA-2436 is a grid parabolic antenna with a broadband dipole horn feed which is sealed for superior weatherability. The antenna is at DC ground to aid in lightning protection. This antenna is extremely rugged and is designed to provide superior performance in any conditions.

#### Electrical Specifications

**Frequency Range:** 2400-2483 MHz  
**Gain:** 24.5 dBi  
**VSWR:** 1.5:1 max.  
**Front to Back Ratio:** 30 dB min.  
**Polarization:** Vertical or Horizontal  
**Power Rating:** 200 Watts  
**H-Plane Beamwidth:** 9 degrees  
**E-Plane Beamwidth:** 10 degrees  
**Cross Pol. Discrimination:** 30 dB min.  
**Impedance:** 50 ohms nominal  
**Termination:** N female

Typical mid band values. (For details , contact factory)  
 Specifications subject to change without notice

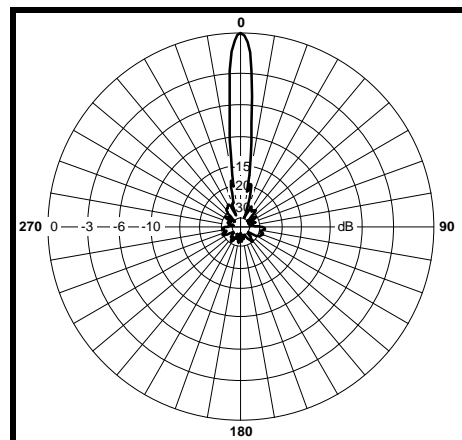
#### Mechanical Specifications

**Diameter:** 38.5 in. (978 mm)  
**Weight (Incl. clamps):** 40 lb. (18.2 kg)  
**Rated Wind Velocity:** 125 mph (200 km/h)  
**Hor. Thrust at rated wind:** 177 lb. (80.5 kg)  
**Mechanical Tilt:** 0 - 15 degrees  
**Mounting (O.D.):** 1.75 - 4.5 in. (44.5 - 114 mm)

#### Materials

**Radiating Elements:** Aluminum  
**Reflector:** Irridated aluminum  
**Clamps:** HDG steel

H-Plane



E-Plane

