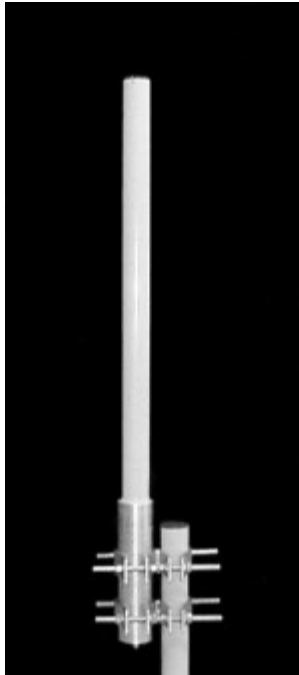


## TA-2550 Omnidirectional 2485-2700 MHz



The TA-2550 is a 10 dBi omnidirectional antenna consisting of center fed collinear dipoles in a UV stabilized fiberglass radome. The antenna is designed for severe weather conditions and is at DC ground to aid in lightning protection.

### Electrical Specifications

**Frequency Range:** 2485-2700 MHz

**Gain:** 10 dBi @ 2485-2690 Mhz

9.25 dBi @ 2700 Mhz

**VSWR:** 1.5:1 max.

**Polarization:** Vertical

**Power Rating:** 50 Watts

**H-Plane Beamwidth:** 360 degrees

**E-Plane Beamwidth:** 8 degrees

**Cross Pol. Discrimination:** 20 dB min.

**Impedance:** 50 ohms nominal

**Termination:** N female

Typical mid band values. (For details , contact factory)  
Specifications subject to change without notice

### Mechanical Specifications

**Length:** 48 in. (1219 mm)

**Diameter:** 2.25 in. (57 mm)

**Weight (Incl. Clamps):** 15 lb. (6.8 kg)

**Rated Wind Velocity:** 125 mph (200 km/h)

**Hor. Thrust at rated wind:** 31 lb. (14.1 kg)

**Mounting (O.D.):** 1.75 - 4.0 in. (44.5 - 102 mm)

### Materials

**Radiating Elements:** Copper

**Radome:** Gray UV stabilized fiberglass

**Clamps:** HDG steel

E-Plane

